

## Västeräng – farm in Sweden with practical experience in plant cultivation, considering diversity and managing risks with useful/harmful insects



**Hans Eriksson**, farmer at Västeräng in Västmanland.

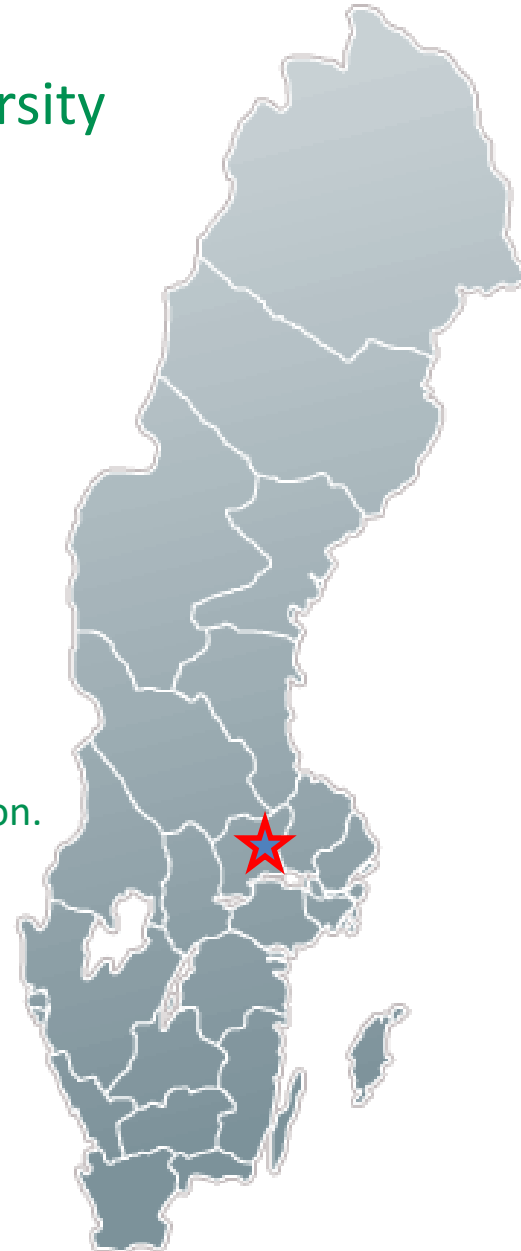
**Farm with specialization:** Cereals, oilseed rape, legumes, seed production.

**Arable land:** 395 ha, conventional.

- Fallow area is regulated if necessary. Flowering fallow is desired.
- Optimized plant sequence with more different focus orientations.

**Cooperation with Swedish Board of Agriculture**

in project **"Biodiversity in the plains"** and with **Pollinate Sweden**



# What we created

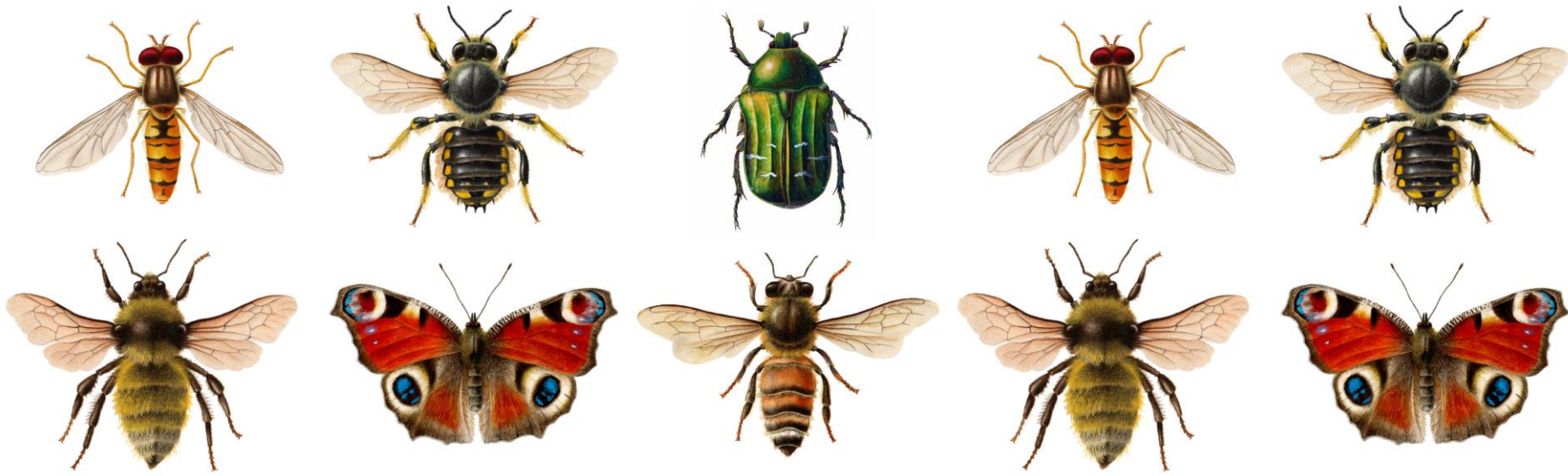
- placed straw bales for wild insects, to establish nests
- good environment for wild pollinating insects
- flowering vegetation instead of grass on passive fields
- very good collaboration with local beekeepers
- extra attention to the choice of chemical preparations
- follow-up inspections.



# Potential with optimal flowering crops

Increased biodiversity and **volume of flowers lead to more pollinating insects**

- Synergies and win-win concepts can be created
- Increased profitability also for beekeepers – higher yields of honey and pollen
- Befriends and increases the amount of bees and bumblebees in our fields, (about 50 percent of our pollinating insects are bumblebees)
- Supports other animal life – promotes birdlife and red-listed species
- Creates a more stable ecosystem
- Increased volume of flowering crops lead to better pollination and can increase yields of white clover up to 90 percent



## Friends and enemies

- Observe the insects and their lifecycle so that you can manage them.
- Dont kill your friends!
- There is a profit in "control"!
- We can do so much more, with simple actions.





## Lessons learned

- Combination of systems is required to achieve credibility, sustainability and security.
- What looks like a profitable business today can turn into an expensive experience tomorrow – evaluation is crucial.
- With increased volume of flowering crops the level of income in plant cultivation can be increased or ensured with optimized pollination – between 5 and 90 percent.
- Profitability and financial security are key words.
- Peer-to-peer knowledge spreading and learning must be supported. Scale up and out!
- Long term perspective is needed.  
Take care of what you have and manage your work and it will be passed on to the next generation.



### **Pollinate Sweden**

– network for collaboration, knowledge dissemination and development  
arranging annual Pollination Week and rewarding Pollinator of the Year

[pollinerasverige.se](http://pollinerasverige.se) / [pollinateeurope.org](http://pollinateeurope.org)

